



TITAN
DECORATIVE MATERIALS GROUP

Installation Instructions

WHAT YOU HAVE TO REMEMBER

IMPORTANT NOTE : **For indoor use only.**

The panels are for internal use only and should not be stored in or left exposed to direct sunlight as ultra violet light will cause fading or discolouration of the panel.

- *The fitting surface must be sound, dry and in good condition.*
- *When using the panels in high pressure shower areas, use silicon sealant in the groove on the back of the lip to maintain a water-tight seal.*
- *Before fitting panels around a source of heat, for example radiators or fire places; make sure the temperature level does not exceed allowed level of 140°C (60°C).*

TITAN Panels® and Aquamax® Decorative PVC panels offer many benefits, they are waterproof, maintenance free, extremely versatile and very easy to install. Our panels can be easily applied to any surface. by fitting them yourself using our easy guide, you won't have to hire costly professionals.

All panels are tongue and groove and need only simple tools to fit and attach them.

TITAN Panels® can be fixed to any surface including uneven surfaces, with little or no preparation required. A range of finishing accessories such as edge trims, internal and external corners, cornice trims and skirting boards are also available to ease the task of fitting and ensure a perfect finish.

Surface preparation

In the majority of the cases there is virtually no preparation needed - the panels can go straight onto brick, cement block, plaster, timber wall studs or stud-work and can even go over existing ceramic tiles. Sometimes bathrooms are half-tiled. In that case tiles can be left in place and the top half levelled out to the same level. Before starting installation, make sure that the extra thickness of the wall panelling does not interfere with the operation of existing fixtures such as bath taps, shower mixer valves and doors.

If the surface is very uneven, wall studs can be used to achieve a level surface and then the panels can be attached to the wall studs. Position studs at 1 to 2 ft (30 to 60 cm) intervals.

The use of studs allows you to install cables for switches, plugs for power supply, phones sockets etc. please note that building codes might require that panels thinner

than 1/4" be installed over a non-combustible backer over timber studs. Such panels should be installed over a solid, non-combustible backing such as gypsum wallboard.

Cutting the Panels

Panels can be easily cut or trimmed using a hand saw, table saw, portable circular saw, jig saw or sharp utility knife. We recommend using a fine-tooth saw. The finer the teeth, the neater the cut you will achieve.

Installation

Panels are normally fixed vertically i.e. from floor to ceiling; however panels may also be fitted horizontally if the shape of the room makes this an easier option. Similarly, ceiling panels can be run in either direction. Of course, you may have a preference as to which way you would like run the panels for visual effect.

FITTING INSTRUCTIONS

Titan decorative plastic panels are easily fixed to almost any surface. Depending upon the type of wall or ceiling you can choose different fitting styles. When the first plank is fixed in place the next conceals the previous fixing (see diagram right). In cases of damp and uneven walls we recommend the use of treated timbers for battening. Ensure that you leave sufficient ventilation behind the cladding by providing an air gap.



Telephone
0191 419 5910

E-mail
info@titan-panels.com

www.titan-panels.com

Titan Decorative Materials Group

1 Faraday Close
Pattinson North Ind. Est.
Washington
Tyne and Wear,
NE38 8QJ.
United Kingdom



Nailing

Apply nails evenly and level in the panel lip. Be careful not to hit the panel with the hammer. This method only applies when fixing the cladding to a wooden surface or battening. Make sure the battening is flat and level, packing out where necessary on uneven walls so that when applied the cladding does not develop curvature and follow the walls contours.

Screw fix



Apply screws through the panel lip as shown in the diagrams above. Screw fixing can be made to wooden wall studs. However breezeblock, brick or plasterboard will require the wall to be plugged before screwing.

Stapling



You can use stainless steel staples when fixing to plaster or wooden wall studs - this method is particularly suitable when using wall studs.

www.titan-panels.com

Gluing



This is the method most preferred by many installers however you can only use adhesive when applied to a dry, even wall. The wall must be free of any greasy substances and dust. Only use specialist adhesive.

Below is one of the methods aimed to minimize the use of trims and achieve very neat and professional look and feel:

Start working from one corner. If cornice will not be used to cover the top edge of the panel, then first fix start/end trim at the top along the wall where panels are to be fixed.

Mitre the ceiling trims where necessary. First, trim off the tongue of the first panel. Apply adhesive to the back of the panels, onto the wall or wall studs. Insert panel into the ceiling trim if installed, then slide it into position in the corner. Make sure that it is placed plumb before fixing to the wall. Slightly tap the panel to achieve better adhesion. Fix panel in place with staples through the lip on the groove side of the panel. Follow the same procedure to fix the first panel along the other wall from the start corner. Make sure that the gap between panels in the corner is small enough to be sealed properly by silicone. If the gap is too big (for example, due to the walls being not plumb), trim the panels accordingly to minimize the gap.

Continue installation along one of the walls by inserting the next panel into the groove of the first panel. Carefully measure, mark and cut the last panel to closely fit into its position on the wall. Follow the same steps to finish all the walls. Use a fine tooth hole-saw to make holes for taps, pipes, etc. Always measure twice and with care. When all walls are covered use neutral cure silicone (anti-fungal silicones recommended) to seal the corners and horizontal joints against baths or shower trays as well as the gaps between panels and bathroom fixtures. The joints between the panels do not need to be sealed, however in a shower area



Coving Trim



External Corner



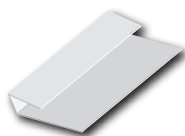
Internal Corner



Quadrant



Rigid Angle



Starter Trim - End Cap

a thin bead of silicone is recommended between tongue and groove to ensure complete protection against moisture ingress.

Apart from using trims (pictured left), both internal and external corners can be neatly achieved by bending the panels - carefully cut the back face of the board where the corner will be and shape the panel into the internal or external curve.

Ceilings

We recommend that ceiling panels be fitted last using finishing trims to allow ease of replacement should this be required in the future. We advise that you do not tile up to ceiling panels.

Use the same installation technique when fitting panels - apply adhesive to an existing ceiling or wall studs and fix the panel with staples to hold it in place.

When fitting halogen ceiling lights a 10mm gap should be maintained between the halogen bulb and the panel.

Accessories

Once the panels are installed there might be other items that you need to fix to the walls, such as soap dishes, shower curtain rails, etc. For lightweight items you can fix directly to the panels using plaster plugs or through the panel into the wall. For larger or heavier items you it is recommended that you fix wooden wall studs behind panels where accessories are to be fitted. Use of spacers between the wall and the surface of the fixed panels is also recommended when fitting heavy items.

Telephone
0191 419 5910

E-mail
info@titan-panels.com

www.titan-panels.com

Titan Decorative Materials Group

1 Faraday Close
Pattinson North Ind. Est.
Washington
Tyne and Wear,
NE38 8QJ.
United Kingdom



CLASS 1



WATERPROOF



HYGIENIC



10
YEAR
GUARANTEE